

1. unit Hitachi KH 150-GLS hydraulic piling rig

Year of manufacture	1989
Serviced in September	2020
Engine	HINO H06C-T
Engine model	6 cylinder turbo charged diesel
Engine output	110 kW / 150 HP @ 2.000 RPM
Hydraulic pumps	2x main pump with 2x 200 ltr/min at 280 bar Variable displacement type.
Leader length whenn assembled	25 meter
Leader configuration	Footplate 0.3m, Footsection 1.35m, Lower section 4.5m 2x leader extension, each 6,3m, upper section 3.3m
Horizontal stroke of leader	1000 mm
Leader width	720 mm
Type of leader construction	tubular
Max. torque allowance on leader	250 kNm 25 ton/meter
Length of tracks	5.210
Track plate width	850 mm
Track plate type	3-ribbed bulldozer type undercarriage
Max. rake position forward	18 degrees
Max rake position backward	18 degrees
Travel speed	0-1,6 km/h
Max. pile weight	12.000 kg
Max. pile + hammer weight	21.000 kg
Transport weight	54.000 kg incl. counterweights
Operational weight approx.	70.000 kg (incl. rotary and power pack)
Transport width	3.500 mm
Included is	Frame for power pack at the rear





Pricing:

1 unit used Hitachi KH 150GLS, serviced

Euro 79,000

1 unit Fundex F12 hydraulic powered piling rig

Year of manufacture	1984
Serviced in September	2018
Engine	DAF 615
Engine type	6 cylinder turbo diesel
Engine output	110 kW / 150 HP
Leader length when assembled	21 + 10 = 31 meter
Type of leader construction	Steel beam construction
Max. torque allowance on leader	90 kNm (9 ton/meter)
Max. pile weight	9.000 kg
Max. pile + hammer weight	19.000 kg
Transport weight	43.000 kg
Transport width	3.500 mm
Operational weight approx.	60.000 kg (incl. hammer)
Machine comes with	instruction & parts book Spare parts package and new spare wire ropes.



This rig comes with a special frame that can be mounted on the rear side on which you can place a hydraulic power pack when using this rig for drilling or for cast in situ piles. If no power pack is used we recommend to put a steel or concrete weight on the frame to act as extra counterweight. Recommended weight 6.000 kg.

Pricing:

1 unit used Fundex F12,

Euro 69,500

Optionally

1 unit Fundex 20S hydraulic power pack, DAF engine

Euro 45,000

1 unit hydraulic rotary head (Fundex or Wirth), 10-20 ton/m

Euro 37,000



GENERAL INFORMATION

The PVE 5021 is a hydraulic piling rig with a total weight of about 52 ton including the counterweight but excluding a hydraulic hammer. The machine has a self-erecting leader, which reduces the set up time of the PVE 5021 considerably and enables the machine to complete several small jobs on one day. The standard configuration of the PVE 5021 is made for executing piling jobs with precast concrete piles.

UNDERCARRIAGE

The PVE 5021 is equipped with a D6C undercarriage (H-shaped construction) with BERCO trackparts. The trackplates are welded so they are more smooth when working on wooden platforms. The undercarriage can be hydraulically extended from 3.45 meter to 4.40 meter.

LEADER

The leader of the PVE 5021 has a length of 24,8 metres and the main dimensions are 650 x 600 mm. The leader head of the PVE 5021 is V-shaped and the leader foot can be folded for transport. For positioning the piles the machine is equipped with a hydraulic pile arm preparations. The arms themselves are not included by you can easily make these your self according your most typical type of piling projects.

WINCHES

The PVE 5021 is equipped with the following hydraulic winches :

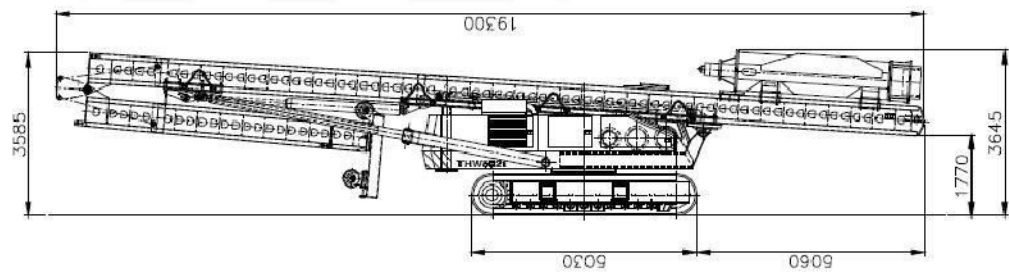
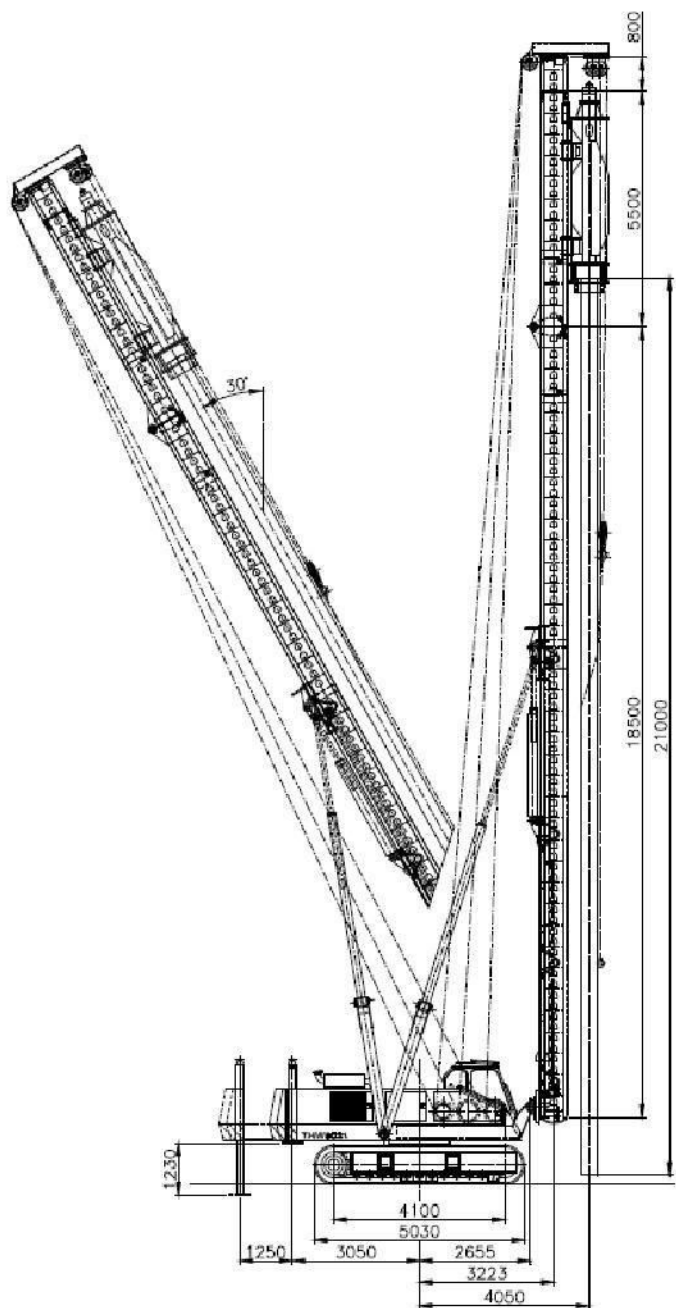
WINCH TYPE	LINE-PULL	SPEED	PARTS	CAPACITY	ROPE DIA.
Hammer winch	6,0 ton	0-40 mtr/min.	2	12 ton	19 mm
Pile winch	6,0 ton	0-40 mtr/min.	2	12 ton	19 mm
Service winch	3,0 ton	0-40 mtr/min.	1	3 ton	16 mm

CABIN AND OTHER SPECIFICATIONS

The operator's cabin of the PVE 5021 has enough room and is arranged ergonomically. The operator's seat is of a good quality and has built-in joysticks for controlling the rig. Standard control of the rig is by means of hydraulic joysticks. All instruments in the operator's cabin are easy to oversee and the standard equipment consists of :

TECHNICAL SPECIFICATIONS PVE 5021 RIG

Max. capacity, pile+hammer	: 18,0 ton
Standard leader length	: 18,8 +6 = 24,8 mtr
Main leader dimensions	: 650x600 mm
Stroke of leader	: 4.500 mm (3.000mm down, 1.500 up)
Stroke of spotting device	: 1.500 mm (horizontal move of leader)
Capacity of hammer winch	: 6,0 ton
Speed of hammer winch	: 0-40 mtr/min
Capacity of pile winch	: 6,0 ton
Speed of pile winch	: 0-40 mtr/min.
Capacity of service winch	: 3,0 ton
Speed of service winch	: 0-40 mtr/min
Dieselengine	: CATERPILLAR C7, TIER III
Engine power at 1800 RPM	: 250 HP approx..
Hydraulic plunger pumps	: Rexroth
Valve blocks	: Rexroth
Electric system	: 24 Vdc
Trackparts	: BERCO
Type of undercarriage	: D6 CSS
Transport length approx	: 21.300 mm
Transp. height (ex hammer)	: 3.585 mm
Transport width	: 3.450 mm
Operating width	: 4.400 mm
Length of undercarriage	: 5.030 mm
Standard trackplate width	: 800-900 mm
Stroke of counterweight	: 1.250 mm
Fixed counterweight	: 1,1 ton
Machine weight (ex hammer)	: 51 ton
Operational weight	: 65 ton incl hammer
Year of Manufacture	: 2007
Running hours	: 11575







Pricing:

1 unit used PVE 5021, serviced and repainted. delivery without hammer Price is ex works	Euro	282,500
1 unit used PVE 5021, serviced and repainted. delivery with used Junttan HHK 5 hammer Price is ex works	Euro	300,000
1 unit used PVE 5021, serviced and repainted. delivery with PVE 7NL hammer (year 2019) Price is ex works	Euro	385,000
